

# The Jetta



Volkswagen



# Contents.

- 04 Exterior
- 08 Interior
- 14 Radio/navigation and driver’s assistance systems
- 16 Wheels
- 18 Think Blue
- 20 Paint and Upholstery
- 22 Combinations
- 26 Technical specification
- 28 Technology and Dimensions
- 30 Volkswagen service

Front cover model shown is Jetta GT with optional 18" 'Charleston' alloy wheels and Pure White non-metallic paint.



Model shown is Jetta GT with optional 18" 'Charleston' alloy wheels and Pure White non-metallic paint.

---

# Turns heads. Wins hearts.

Meet the Jetta, now more sleek and stylish than ever before. With its revised front and rear design, enhanced features, stylish interior and wealth of standard equipment, it's refined, comfortable and spacious. Not to mention practical, elegant, dynamic and dependable, the Jetta delivers all round, offering real value for money and allowing you to think with your head as well as your heart. Family car or business vehicle, nothing makes more sense.



Model shown is Jetta GT with optional Pure White non-metallic paint.



01

# The timeless appeal of classic design.

Models shown are Jetta GT with optional 18" 'Charleston' alloy wheels and Pure White non-metallic paint.



02

**01** Classic design is timeless, with form and function working harmoniously together, as the Jetta demonstrates. The **black radiator grille** with chrome trimmed louvres and body-coloured bumper creates an elegant front design. This is enhanced by the front air intake grille and integrated front fog lights with static cornering function, which add character. Range adjustable halogen headlights with daytime running lights provide clear illumination, adding to the stylish front design. Model shown features optional Pure White non-metallic paint.

Front fog lights are standard on GT and optional on S and SE models.

**02** The story continues to the rear, where the **boot lid** incorporates an aerodynamic lip which sits above the **rear light clusters** and the bumper with diffuser and reflectors. The profile is sleek and streamlined, creating a distinctive look. Model shown features optional Pure White non-metallic paint.



Interior shown is Jetta SE with optional climate control – 2Zone electronic air conditioning, multifunction colour display and Pure White non-metallic paint.

## An inner world of peace and order.

No question about it, the world is moving faster, life is more pressured and it's hard to stay in control. Unless you're sitting in the Jetta. Here, everything is exactly where you would expect it to be, ergonomically arranged and intuitively to hand, providing a haven of tranquillity and order. The large high definition screen of the multifunction computer displays important driving information, such as current or average fuel consumption and the status of your connected mobile phone.



The large 3.5" TFT colour screen of the multifunction computer displays important driving information such as journey time, outside temperature, range left in the fuel tank, total driving time and the status of your connected mobile phone. Standard on GT and optional on SE models.



Interior shown is Jetta SE with optional Discover Navigation touch-screen navigation/radio system with Car-Net 'Guide and Inform', climate control – 2Zone electronic air conditioning and Pure White non-metallic paint.

# Sit back, relax and enjoy the drive.

Who doesn't occasionally long to sit back, relax and catch breath? Thanks to the Jetta's comfortable interior and exciting trim levels, you can do this while on the road. Take for example the SE model, everything has been designed for your comfort and relaxation, from the 'Sienna' cloth upholstery in Titanium Black, Ceramique/Titanium Black or Corn Silk Beige and 'Zebrano' decorative inserts in the dash and door panels to the revised dashboard instrumentation and redesigned steering wheel. Stylish, refined and practical, it all makes for a pleasant journey, ensuring you arrive at your destination refreshed and relaxed.

# Busy day? No problem.



01 The Jetta is not only spacious, it's also well organised. High quality **integrated bag hooks** help keep everything conveniently to hand, ensuring you can find exactly what you're looking for. Standard on all models.



02 The innovative **leather trimmed three-spoke multifunction steering wheel** enables you to control a whole range of functions, including the radio or optional navigation system, telephone and in-car entertainment, without taking your hands off the wheel, allowing you to focus on the road ahead and adding to a more comfortable driving experience. Standard on SE and GT and optional on S models.

03 Front comfort seats in stylish **'Sienna' cloth upholstery** feature height and lumbar adjustment to ensure optimum comfort while you travel. Standard on SE models. Image shown features Ceramique/Titanium Black upholstery.



# Technology that entertains, navigates and keeps you connected.



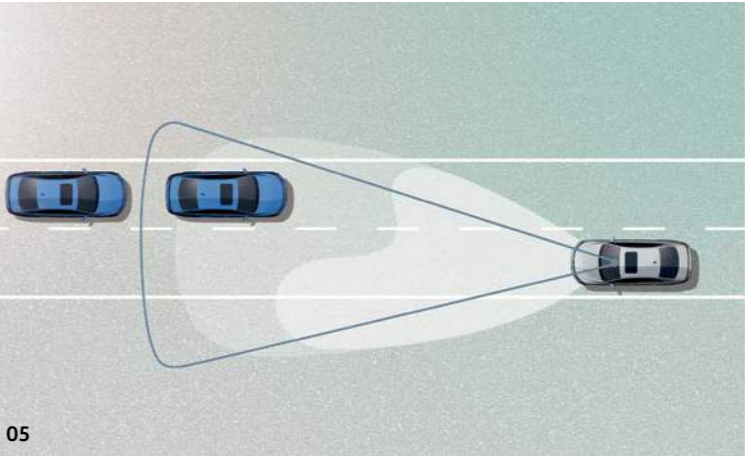
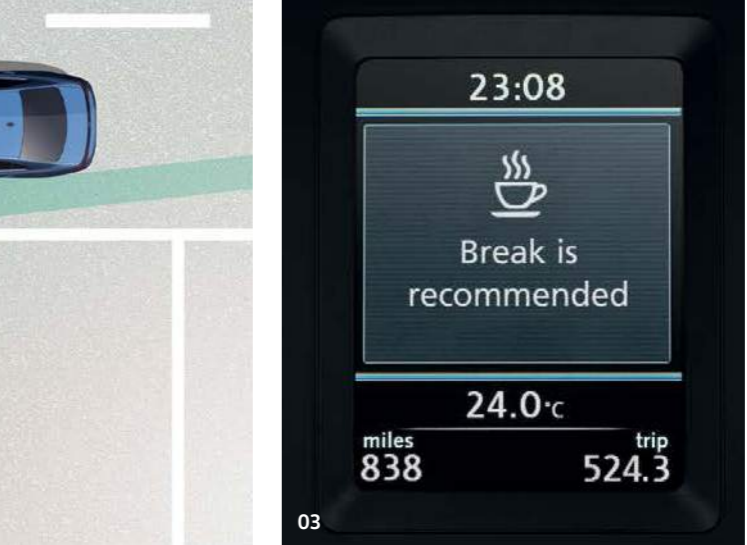
**01 The Composition Colour system** features a 5 inch colour touch-screen, AUX-in socket for connection to an external multimedia source, such as an iPod or MP3 player, a DAB digital radio receiver, dash-mounted single CD player, SD card reader, music playback from MP3, WMA and AAC files, USB connectivity<sup>1</sup> and eight speakers front and rear with 4 x 20 watt output. Standard on S models.

**02** Building over the impressive **Composition Colour system**, the **Composition Media system** is further equipped with a 6.5 inch colour touch-screen and features title and cover art display. There is also SMS functionality which allows you to read, compose and send SMS messages using the touch-screen display to a compatible Android smartphone (while the vehicle is stationary). An MDI (Multi Device Interface) via USB connection for connectivity to a compatible device, while a Bluetooth telephone and audio connection also allows simultaneous pairing of two compatible mobile devices<sup>2</sup>. Optional on S and standard on SE and GT models.

**03 The Discover Navigation touch-screen navigation/radio system with Car-Net 'Guide and Inform'**<sup>3</sup> includes a 6.5 inch colour touch-screen for navigation, CD and radio functions, and has preloaded European navigation data, 2D/3D map view, three calculated routes (Fast, Short, Eco), dynamic navigation based on TMC+, branded points of interest and Speed Limit Display<sup>4</sup>. **Car-Net 'Guide and Inform'** functionality allows online access for a period of three years to a range of useful information such as traffic, fuel pricing, parking space availability, weather and news feeds. The system also includes online navigation software updates, enabling you to download the latest navigation map data, please contact your authorised Volkswagen retailer for full details. Optional on all models.

<sup>1</sup> Not compatible with Apple products, compatibility with other devices may vary, please contact your authorised Volkswagen retailer for full details.  
<sup>2</sup> Devices must be Bluetooth HFP (Hands Free Profile) compatible, please contact your authorised Volkswagen retailer for specific phone compatibility.  
<sup>3</sup> Car-Net 'Guide and Inform' services are accessed via a compatible mobile device. Please see [www.volkswagen.co.uk](http://www.volkswagen.co.uk) for more information. The use of 'Guide and Inform' services entails exchanging large volumes of data. As such, we strongly recommend that you sign-up for a flat rate data plan with your mobile network provider. After the initial 3-year Car-Net contract, an annual subscription is chargeable for the continuation of Car-Net 'Guide and Inform' services.  
<sup>4</sup> Speed Limit Display only reflects national speed limits and does not show temporary speed limit restrictions, or where permanent changes to speed limits are made in-between map updates.

# Intelligent driver's assistance systems do some of the hard work for you.



**01 Side scan with blind spot monitor** provides additional peace of mind by assisting when you want to change lanes. A radar sensor controlled warning system monitors your blind spot and should it detect a potentially hazardous situation, it warns you by means of flashing warning lights in the door mirror housing. Optional on SE and GT models. Image shown features optional Pure White non-metallic paint.

**02 The Parking sensor pack** comprises **front and rear parking sensors** and **reverse activated kerb-view adjustment on the passenger's side door mirror**. The parking sensors assist in parking manoeuvres by emitting ultrasonic, audible and visual signals, alerting the driver to any obstacles in the way. In addition, an optical parking display extends the functions of the parking sensors by indicating your position in colour on the vehicle's audio display during parking. Optional on all models.

**03 The Driver Alert system** monitors driver behaviour. As soon as it detects unusual driving patterns, such as lane deviation or erratic steering movements, it recommends taking a break via visual and acoustic signals. Standard on GT models.

**04 The rear-view camera** helps you reverse park by giving you a clear view to the rear of your vehicle via the display of your radio/navigation system, featuring auxiliary lines to help you park and enabling you to recognise even small obstacles such as kerbs. Optional on all models. Image shown features Discover Navigation touch-screen navigation/radio system.

**05 High Beam Assist including Convenience pack** senses the lights from oncoming vehicles and switches between dipped and main beam accordingly. It also senses vehicles you are approaching from the rear and ensures dipped beam is selected in order to avoid dazzling vehicles in front, ensuring better vision, comfort and road presence when driving at night. Optional on all models.

**06 Automatic Post-Collision Braking System** (not shown). Supported by the airbag sensors, the Automatic Post-Collision Braking System automatically initiates braking after the vehicle suffers a collision. The system brakes for as long as necessary to reduce the speed of the vehicle to 6mph in order to prevent or minimise the severity of subsequent collisions. Standard on all models.

Images shown are for illustration purposes only and may not necessarily reflect UK specification.



'Charleston' 7½J x 18" alloy wheels with 225/40 R18 tyres and anti-theft wheel bolts. Optional on GT models.

Model shown is Jetta GT with optional 18" 'Charleston' alloy wheels and Pure White non-metallic paint.

Add a touch of individuality  
with a stylish choice of wheels.



6½J x 16" **steel wheels** with 205/55 R16 low rolling resistance tyres and full size wheel trims. Standard on S models.



'Atlanta' 6½J x 16" alloy wheels with 205/55 R16 low rolling resistance tyres and anti-theft wheel bolts. Standard on SE\* and optional on S models.



'Lancaster' 7J x 17" alloy wheels with 225/45 R17 tyres and anti-theft wheel bolts. Standard on GT and optional on SE models.



'Perth' 6J x 16" alloy wheels with 205/55 R16 low rolling resistance tyres and anti-theft wheel bolts. Optional on S and SE\* models.



'Queensland' 7J x 17" alloy wheels with 225/45 R17 tyres and anti-theft wheel bolts. Optional on SE and GT models. SE models include sports suspension, lowered by approx. 15mm.



'Queensland Black' 7J x 17" alloy wheels with 225/45 R17 tyres and anti-theft wheel bolts. Optional on GT models.



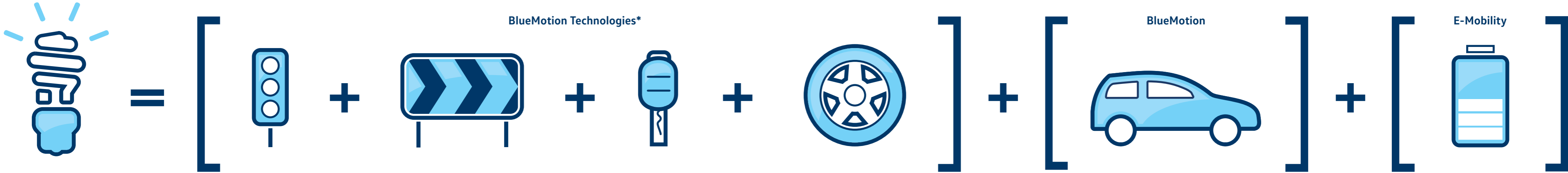
'Porto' 7J x 17" alloy wheels with 225/45 R17 tyres and anti-theft wheel bolts. Optional on SE and GT models. SE models include sports suspension lowered by approx. 15mm.



'Charleston' 7½J x 18" alloy wheels with 225/40 R18 tyres and anti-theft wheel bolts. Optional on GT models.

\* Low rolling resistance tyres are not fitted to models with 1.4 TSI 150 PS or 2.0 TDI 150 PS engines. Models shown feature optional Pure White non-metallic paint.

# Think Blue.



Think Blue.

**Start/Stop technology**  
saves fuel by automatically switching off the engine when the car isn't in motion.

**Brake energy recuperation system**  
makes use of energy that's usually lost when you brake.

**Turbocharged engines**  
deliver more power when you need it and use less fuel when you don't.

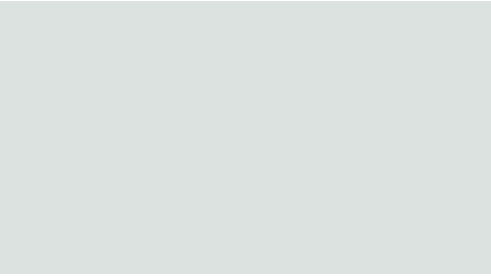
**Low rolling resistance tyres**  
reduce the friction between the tyre and the road, meaning it takes less energy – and less fuel – to go further.

**Purpose-built BlueMotion cars**  
include the full range of BlueMotion Technologies as well as an aerodynamically optimised design to reduce wind resistance.

**Electric vehicles**  
comprise both hybrid and fully electric vehicles, offering all the features of their regular counterparts.

\*BlueMotion Technologies are available on all Volkswagens and vary between models.

Paint.



Pure White Non-Metallic OQ

SSEGT



Black Non-Metallic A1

SSEGT



Tornado Red Non-Metallic G2

SSEGT



Moon Rock Silver Metallic OB

SSEGT



Blue Silk Metallic 2B

SSEGT



Dark Bronze Metallic 2J

SSEGT



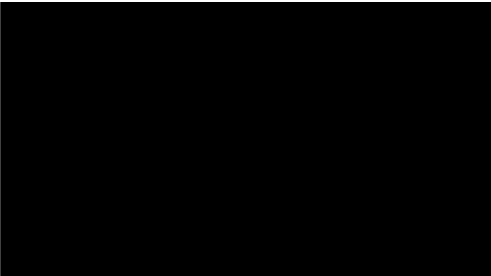
Platinum Grey Metallic 2R

SSEGT



Ruby Red Metallic 7H

SSEGT



Deep Black Pearl Effect 2T

SSEGT

Standard Optional at extra cost

S – S SE – SE GT – GT

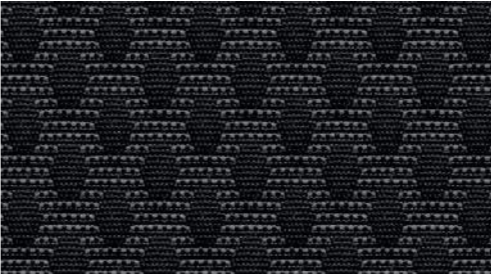
Please note: Colour range is reproduced for illustration purposes only. Actual on-car colours may vary from those shown, as print processes do not allow exact reproduction of the paint colours.

Upholstery.



'Doryc' cloth Titanium Black JM

S



'Sienna' cloth Titanium Black JM

SE



'Sienna' cloth Corn Silk Beige JP

SE



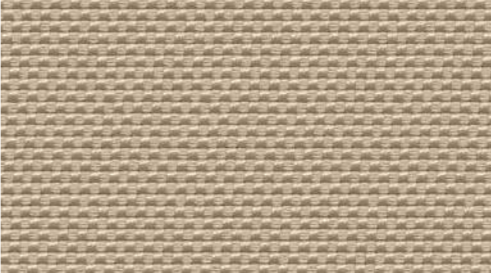
'Sienna' cloth Ceramique/Titanium Black KB

SE



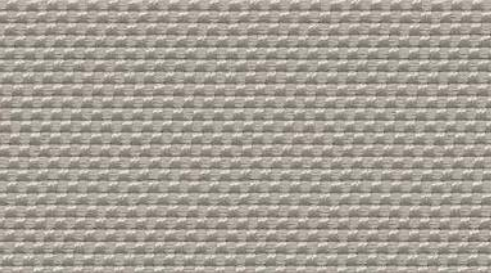
'Gloss' cloth seat centre section and leather-look side bolsters Titanium Black JM

GT



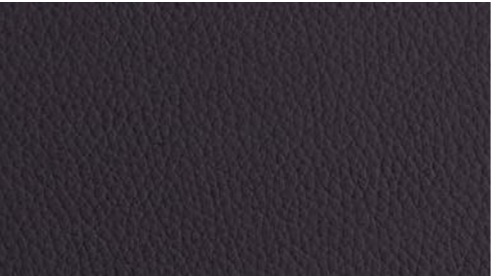
'Gloss' cloth seat centre section and leather-look side bolsters Corn Silk Beige JP

GT



'Gloss' cloth seat centre section and leather-look side bolsters Ceramic LQ

GT



'Vienna' leather\* Black TW

SEGT



'Vienna' leather\* Corn Silk Beige YY

SEGT



'Vienna' leather\* Ceramic LQ

SEGT

Standard Optional at extra cost

S – S SE – SE GT – GT

\* Some parts of leather interior will contain artificial leather.

Please note: Swatches reproduced for illustration purposes only. Actual upholstery colours may vary from those shown, as print processes do not allow exact reproduction of the upholstery colours.

Combinations.

	Carpet	Dashboard	Pure White Non-Metallic* 0Q	Black Non-Metallic A1	Tornado Red Non-Metallic* G2	Moon Rock Silver Metallic* 0B	Blue Silk Metallic* 2B	Dark Bronze Metallic* 2J	Platinum Grey Metallic* 2R	Ruby Red Metallic* 7H	Deep Black Pearl Effect* 2T
<b>'Doryc' cloth</b>											
<b>Standard on S models</b>											
Titanium Black (JM)	Black	Titanium Black	●	●	●	●	●	●	●	●	●
<b>'Sienna' cloth</b>											
<b>Standard on SE models</b>											
Titanium Black (JM)	Black	Titanium Black	●	●	●	●	●	●	●	●	●
Corn Silk Beige (JP)	Corn Silk Beige	Titanium Black	●	●	●	●	●	●	●	●	●
Ceramique/Titanium Black (KB)	Black	Titanium Black	●	●	●	●	●	●	●	●	●
<b>'Gloss' cloth seat centre section and leather-look side bolsters</b>											
<b>Standard on GT models</b>											
Titanium Black (JM)	Black	Titanium Black	●	●	●	●	●	●	●	●	●
Corn Silk Beige (JP)	Corn Silk Beige	Titanium Black	●	●	●	●	●	●	●	●	●
Ceramic (LQ)	Black	Titanium Black	●	●	●	●	●	●	●	●	●
<b>'Vienna' leather*†</b>											
<b>Optional on SE and GT models</b>											
Black (TW)	Black	Titanium Black	○	○	○	○	○	○	○	○	○
Corn Silk Beige (YY)	Corn Silk Beige	Titanium Black	○	○	○	○	○	○	○	○	○
Ceramic (LQ)	Black	Titanium Black	○	○	○	○	○	○	○	○	○

\* Pure White and Tornado Red non-metallic, metallic and pearl effect paints, and leather upholstery are optional at extra cost.  
† Some parts of leather interior will contain artificial leather.  
● Standard.   ○ Optional at extra cost.   – Not available.



Model shown is Jetta GT with optional 18" 'Charleston' alloy wheels and Pure White non-metallic paint.

# There's a Volkswagen for all of us.

Nippy city run around? Luxurious executive saloon? Open-top cruiser? Whatever it is you're looking for, we probably have it. From the iconic Beetle and Golf GTI to the compact up!, there's a Volkswagen for everyone.

If you're thinking you might like to try a different Volkswagen, there are over 20 models in our range, so there's bound to be at least one that catches your eye.



## Sporty

**Golf:** As exciting to drive as it is to look at. Style, performance and power.

You will also find our sporty gene in the iconic Golf GTD and Golf R.



## Spacious family cars

**New Sharan:** The ultimate in convenience with sliding rear doors, and enough space for the whole family. And their luggage. And the dogs.

If it's space you're after, then you might also like to consider the Tiguan, Golf SV, Golf Estate, new Touran and Passat Estate.



## Style

**Beetle:** The original icon. And still the most unique way to make a fashion statement.

For more fun with the top down, why not consider Beetle Cabriolet or the Golf Cabriolet.



## City run around

**up!:** The ideal city car. Fun, easy to manoeuvre and surprisingly spacious, with that trademark Volkswagen solidity.

If you're looking for something slightly more spacious, then why not consider the up!'s bigger sibling, the Polo. City run around practicality with more versatility and even more space can be found on the iconic Golf.



## Executive

**Volkswagen CC:** Perfectly turned out high-tech, executive luxury. A contemporary, stylish and innovative coupé.

All the luxury you need can also be found in the Jetta, and executive comfort in the Passat and Passat Estate – winner of 'European Car of the Year 2015'.



## 4x4

**Touareg:** The SUV just got smarter. True four by four capability off-road, and smooth, luxurious and powerful when on it, with four wheel drive technology, '4MOTION' as standard.

Go everywhere, do anything in our four wheel drive alternatives: Golf Alltrack, Tiguan and Passat and Passat Estate 4MOTION models.

To see these models and configure your ideal Volkswagen, visit: [www.volkswagen.co.uk](http://www.volkswagen.co.uk)

Technical specification.

	S, SE 1.4 ltr TSI 125 PS BlueMotion Technology	SE, GT 1.4 ltr TSI 150 PS BlueMotion Technology	S†, SE 2.0 ltr TDI 110 PS BlueMotion Technology	GT 2.0 ltr TDI 110 PS BlueMotion Technology	SE, GT 2.0 ltr TDI 150 PS BlueMotion Technology
<b>Engine</b>					
Engine type	4 cylinder petrol	4 cylinder petrol	4 cylinder diesel	4 cylinder diesel	4 cylinder diesel
Cubic capacity, ltrs/cc	1.4/1395	1.4/1395	2.0/1968	2.0/1968	2.0/1968
Max. output, PS <sup>(01)</sup> /kW	125/92	150/110	110/81	110/81	150/110
at rpm	5000-6000	5000-6000	3200-4000	3200-4000	3500-4000
Max. torque, lbs.ft/Nm	148/200	185/250	185/250	185/250	251/340
at rpm	1400-4000	1500-3500	1750-3000	1750-3000	1750-3000
Gearbox	6-spd manual	6-spd manual	5-spd manual	5-spd manual	6-spd manual
	–	7-spd auto DSG	7-spd auto DSG	7-spd auto DSG	6-spd auto DSG
<b>Weights, kgs</b>					
Manual gearbox:					
Unladen weight <sup>(02)</sup>	1341	1347	1395	1395	1425
Gross vehicle weight	1850	1850	1910	1910	1940
Payload <sup>(02)</sup>	584	578	590	590	590
Axle load limit: Front	950	950	1010	1010	1040
Rear	950	950	950	950	950
Automatic DSG gearbox:					
Unladen weight <sup>(02)</sup>	–	1364	1415	1415	1448
Gross vehicle weight	–	1870	1930	1930	1960
Payload <sup>(02)</sup>	–	581	590	590	587
Axle load limit: Front	–	970	1030	1030	1060
Rear	–	950	950	950	950
<b>Trailer load limits, kgs <sup>(03)</sup></b>					
Braked 12% incline:					
Manual gearbox	1300	1400	1500	1500	1500
Automatic DSG gearbox	–	1400	1500	1500	1500
Unbraked:					
Manual gearbox	670	670	690	690	710
Automatic DSG gearbox	–	680	700	700	720
Towbar load limit	80	80	80	80	80
Max. roof load	75	75	75	75	75

† Seven speed automatic gearbox only available on SE models.

	S, SE 1.4 ltr TSI 125 PS BlueMotion Technology	SE, GT 1.4 ltr TSI 150 PS BlueMotion Technology	S†, SE 2.0 ltr TDI 110 PS BlueMotion Technology	GT 2.0 ltr TDI 110 PS BlueMotion Technology	SE, GT 2.0 ltr TDI 150 PS BlueMotion Technology
<b>Performance</b>					
Top speed, mph (km/h), where the law permits					
Manual gearbox	128 (206)	137 (220)	122 (197)	122 (197)	137 (220)
Automatic DSG gearbox	–	137 (220)	122 (197)	122 (197)	135 (218)
Acceleration, secs 0 – 62mph					
Manual gearbox	9.6	8.6	11.0	11.0	8.9
Automatic DSG gearbox	–	8.6	11.0	11.0	8.9
ABI insurance group, 1 – 50	18E, 18E	21E, 21E	14E, 15E	15E	22E, 22E
<b>Environmental information</b>					
Fuel grade, minimum	Unleaded, 95 RON	Unleaded, 95 RON	Diesel <sup>(04)</sup>	Diesel <sup>(04)</sup>	Diesel <sup>(04)</sup>
Fuel tank capacity, galls/ltrs <sup>(05)</sup>	11/50	11/50	11/50	11/50	11/50
Official fuel consumption					
manual gearbox, mpg/ltr per 100km <sup>(06)</sup>					
Urban	40.9/6.9 <sup>(06)</sup>	41.5/6.8 <sup>(06)</sup>	56.5/5.0 <sup>(06)</sup>	56.5/5.0 <sup>(06)</sup>	56.5/5.0 <sup>(06)</sup>
Extra-urban	62.8/4.5 <sup>(06)</sup>	64.2/4.4 <sup>(06)</sup>	78.5/3.6 <sup>(06)</sup>	76.3/3.7 <sup>(06)</sup>	74.3/3.8 <sup>(06)</sup>
Combined	52.3/5.4 <sup>(06)</sup>	53.3/5.3 <sup>(06)</sup>	68.9/4.1 <sup>(06)</sup>	68.9/4.1 <sup>(06)</sup>	67.3/4.2 <sup>(06)</sup>
Official fuel consumption					
automatic DSG gearbox, mpg/ltr per 100km <sup>(06)</sup>					
Urban	–	45.6/6.2 <sup>(06)</sup>	58.9/4.8 <sup>(06)</sup>	58.9/4.8 <sup>(06)</sup>	51.4/5.5 <sup>(06)</sup>
Extra-urban	–	64.2/4.4 <sup>(06)</sup>	72.4/3.9 <sup>(06)</sup>	72.4/3.9 <sup>(06)</sup>	68.9/4.1 <sup>(06)</sup>
Combined	–	55.4/5.1 <sup>(06)</sup>	67.3/4.2 <sup>(06)</sup>	67.3/4.2 <sup>(06)</sup>	62.8/4.5 <sup>(06)</sup>
Official CO <sub>2</sub> emission, g/km					
Manual gearbox <sup>(06)</sup>	125 <sup>(06)</sup>	123 <sup>(06)</sup>	107 <sup>(06)</sup>	109 <sup>(06)</sup>	109 <sup>(06)</sup>
Automatic DSG gearbox <sup>(06)</sup>	–	117 <sup>(06)</sup>	109 <sup>(06)</sup>	109 <sup>(06)</sup>	120 <sup>(06)</sup>
Emission class	EURO 6	EURO 6	EURO 6	EURO 6	EURO 6
Noise, dB					
Manual gearbox	71.0	72.0	71.0	71.0	71.0
Automatic DSG gearbox	–	72.0	71.0	71.0	71.0

Technology and Dimensions.

Technical specification notes

- 01) The maximum power output figures are quoted in PS (or Pferdestärke, which is the metric equivalent of horsepower). To convert from metric to imperial horsepower, divide the PS figure by 1.0139.
- 02) Figures are calculated in accordance with manufacturer’s criteria. The individual unladen weight depends on the specification of the vehicle, this then reduces the possible payload accordingly. The unladen weight and payload both include the fuel tank 90% full, driver (68kg) and luggage (7kg) in line with EU directive 95/48.
- 03) With increasing altitude the engine performance diminishes. From 1,000m above sea level and for every 1,000m thereafter 10% of the vehicle/trailer weight (trailer weight + gross vehicle weight) must be deducted.
- 04) The use of 100% RME and FAME (bio diesel) is not possible. Forecourt diesel with up to 7% bio diesel content, adhering to standard BS EN 590, can be used in diesel engines. The use of ethanol in forecourt petrol meeting BS EN 228 is allowable.
- 05) The size of the fuel tank is approximate and therefore it may be possible to add a greater amount of fuel than the size of the tank specified, due to the space in the filler neck.
- 06) Fuel consumption and CO<sub>2</sub> figures are obtained under standardised EU test conditions (Directive 93/116/EEC). This allows a direct comparison between different manufacturer models but may not represent the actual fuel consumption achieved in ‘real world’ driving conditions. More information is available on the Volkswagen website at [www.volkswagen.co.uk](http://www.volkswagen.co.uk) and at [www.dft.gov.uk/vca](http://www.dft.gov.uk/vca). The weight of a vehicle will influence the level of CO<sub>2</sub> emissions it produces; as a result, vehicles with higher levels of specification and factory-fitted options may emit higher levels of CO<sub>2</sub>. Choosing larger alloy wheels than those fitted as standard may result in increased fuel consumption as well as higher CO<sub>2</sub> emissions and subsequently an increased Vehicle Excise Duty (VED) band. BIK rates paid by company car drivers may also increase. In some instances, the recommended ‘On the road’ retail price paid for a vehicle may increase as a result of the increased VED rate. CO<sub>2</sub> is the main greenhouse gas responsible for global warming. The specifications contained in this brochure are for information purposes only and are subject to change.

Transmission

- Front wheel drive through asbestos-free single-plate dry clutch. Hydraulic clutch-mechanism. Five or six speed manual, six or seven speed automatic DSG gearbox with double joint half axles (wet clutch on six speed DSG models)
- Electronic differential lock, combined with a hydraulically operated single-plate dry clutch with asbestos-free lining via a six speed automatic DSG gearbox
- Five speed manual: 2.0 litre TDI 110 PS
- Six speed manual: 1.4 litre TSI 125 PS, 1.4 litre TSI 150 PS, 2.0 litre TDI 150 PS
- Six speed auto DSG: 2.0 litre TDI 150 PS
- Seven speed auto DSG: 1.4 litre TSI 150 PS, 2.0 litre TDI 110 PS

Running gear

- ESC (Electronic Stability Control) including EDL (Electronic Differential Lock), Traction Control (ASR) and Countersteer Support
- Front suspension through coil springs with telescopic shock absorbers, all elements integrated in chassis legs
- Rear suspension with gas pressure shock absorbers and separate springs
- Wheel control: front through chassis legs and (lower) triangular wishbones (directionally stabilising steering roll radius)
- Wheel control: rear through four-link suspension with independent wheel suspension
- Front and rear anti-roll bar

Steering

- Electro-mechanical steering rack
- Collapsible, height and lengthways adjustable safety steering column

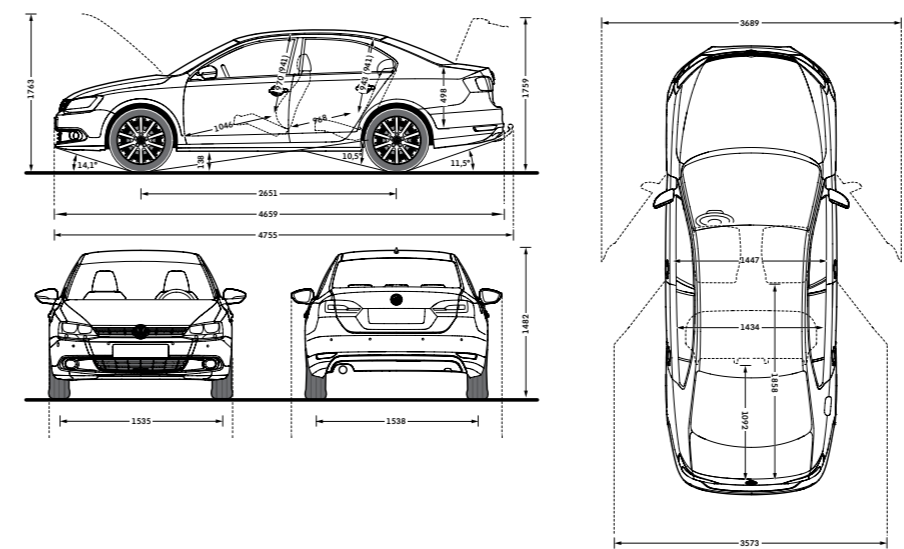
Brakes

- Electronically controlled Anti-lock Braking System (ABS) – includes HBA (Hydraulic Brake Assist) and Electronic Brake-pressure Distribution (EBD)
- Diagonal twin-circuit brake system with front disc brakes (inner-ventilated) and rear disc brakes
- Asbestos-free brake pads
- Brake energy recuperation

Engines

- Front transverse-installed engine
- 1.4 litre/125 PS <sup>(01)</sup> (92 kW) petrol engine: EU6 emissions standard, four cylinder in-line direct injection turbocharged engine, with four valves per cylinder. Fitted with a turbocharger. Available with a six speed manual transmission
- 1.4 litre/150 PS <sup>(01)</sup> (110 kW) petrol engine: EU6 emissions standard, four cylinder in-line direct injection turbocharged engine, with four valves per cylinder. Fitted with a turbocharger. Available with a six speed manual or a seven speed automatic DSG transmission
- 2.0 litre/110 PS <sup>(01)</sup> (81 kW) common rail diesel engine: EU6 emissions standard, four cylinder in-line common rail diesel engine, with four valves per cylinder. Fitted with a turbocharger and a DPF (Diesel Particulate Filter). Available with a five speed manual or a seven speed automatic DSG transmission
- 2.0 litre/150 PS <sup>(01)</sup> (110 kW) common rail diesel engine: EU6 emissions standard, four cylinder in-line common rail diesel engine, with four valves per cylinder. Fitted with a turbocharger and a DPF (Diesel Particulate Filter). Available with a six speed manual or a six speed automatic DSG transmission

Dimensions



On illustrations, where arrows and figures are shown inside of the vehicle, the measurements are for interior dimensions. Where arrows and figures are shown outside of the vehicle, the measurements are for exterior dimensions.

Exterior dimensions	
Length, mm	4659
Width – including door mirrors, mm	2020
Width – opened front/rear doors, mm	3689/3573
Height – mm	1482
Height – opened bonnet/floor, mm	1763
Height – opened tailgate/floor, mm	1759
Wheelbase, mm	2651
Turning circle, m	11.1

Interior dimensions	
Effective headroom – front, mm (with sunroof)	970 (941)
Effective headroom – rear, mm (with sunroof)	943 (941)
Elbow width, front, mm	1447
Elbow width, rear, mm	1434
Legroom front, mm	1046
Legroom rear, mm	968

Maximum luggage capacity, litres VDA measuring method using 200 x 100 x 50mm blocks	
With rear seats upright	510

Figures shown are for standard specification models. The addition of certain factory-fitted options and/or accessories may affect some of the dimensions shown.

# Volkswagen service.

Exclusions and terms and conditions apply to all warranties and plans listed. For pricing and further details of Volkswagen Warranties and Service Plans, please consult your authorised Volkswagen retailer or repairer, or visit [www.volkswagen.co.uk](http://www.volkswagen.co.uk)

### Three-year Warranty

All Volkswagen passenger cars come with a three-year/60,000 miles warranty, which protects your car against the failure of most technical and electrical components due to manufacturing defects. This comprises a two-year manufacturer's warranty with unlimited mileage plus a further one-year/60,000 miles (whichever is soonest) Retailer Warranty<sup>1</sup>. Should the mileage exceed 60,000 miles within the first two years, the manufacturer's two-year warranty will still be valid. Full details of the three-year warranty are available from your authorised Volkswagen retailer or repairer.

### Body Protection Warranty

The internal body sections and panels of the Jetta are covered against rusting through from the inside for 12 years. Naturally, the vehicle must be cared for in compliance with the manufacturer's operating instructions. Please consult your authorised Volkswagen retailer or repairer for full warranty details.

### Three-year Paintwork Warranty

This latest paintwork warranty, pioneered by Volkswagen, provides you with cover on a new car. Naturally, during the warranty period the car must be cared for in compliance with the manufacturer's operating instructions. Any paintwork defects, as a result of the manufacturing process, will be rectified without charge.

### Approved Accessories

A comprehensive range of accessories from alloy wheels to carpet mats is available to complement the factory-fitted option list. Volkswagen approved accessories purchased from and fitted by your authorised Volkswagen retailer at the point of vehicle sale will also benefit from the three-year vehicle warranty.

### Extended Warranty

If you order the Volkswagen Extended Warranty as an option when buying your new Jetta then you get the 100% Volkswagen Warranty and you can continue to enjoy comprehensive Volkswagen protection against many unforeseeable repair costs. Designed to your needs, you can purchase an extra one or two year's warranty up to a maximum of five years or 90,000 miles.

### Service Intervals

Volkswagen is pleased to offer you a choice on how your Volkswagen is serviced. The appropriate selection is entirely dependent on how the car is likely to be driven and its general use. To help you identify which type of service would be most suitable, please refer to the following guide.

The Fixed Service is recommended for vehicles that will cover less than 10,000 miles in 12 months and if the vehicle is likely to be used in the following way:

- Predominantly urban driving, short journeys with frequent cold starts.
- Activities regularly producing high engine loading, e.g. frequent hill climbs, driving with vehicle fully loaded and towing.
- Uneconomical driving style using high rpms with heavy acceleration and heavy braking.

The service intervals for the Fixed Service are as follows:

- Oil change service – After 1 year or 10,000 miles (15,000km), whichever is soonest.
- Inspection service<sup>2</sup> – First after 2 years or 20,000 miles (30,000km), then every one year or 20,000 miles (30,000km), whichever is soonest.

The Flexible Service is recommended for vehicles with daily mileage of more than 25 miles where the vehicle is driven regularly mainly on longer distance journeys. The vehicle is driven mainly at a constant speed with minimum vehicle and engine loading, minimal towing and driven in an economical manner. With the Flexible Service the vehicle can cover anywhere between 10,000<sup>3</sup> and a maximum of 20,000<sup>3</sup> miles or 24 months (whichever is soonest) between oil changes.

The service intervals for the Flexible Service are as follows:

- Oil change service – According to flexible service interval display (after 2 years at the latest).
- Inspection service<sup>2</sup> – First after 2 years or 20,000 miles (30,000km), then every one year or 20,000 miles (30,000km), whichever is soonest.

The up! model is only available with the Fixed Service schedule. Please consult your authorised Volkswagen retailer or repairer for advice and full details.

Please note: If you purchase a Volkswagen Fixed Price Service Plan your vehicle will follow the Fixed Service schedule.

### Volkswagen Insurance<sup>4</sup>

We want you to start enjoying your new car from day one and thanks to Volkswagen free 5 day insurance, you can. Call free on 0330 303 6930 (lines are open Monday to Friday 8am – 9pm and Saturday 9am – 5pm), provide a few details and a cover note will be sent to your retailer. They will then tax your car and you can drive it away.

### Volkswagen Ensurance<sup>5</sup>

Get three years' Volkswagen Ensurance cover for free. Another great benefit of being a Volkswagen driver. If your Volkswagen was damaged in an accident, wouldn't you want it fixed by a Volkswagen trained technician using only genuine Volkswagen parts? Ensurance is Volkswagen's accident and repair cover which does exactly that. It works alongside your main comprehensive motor insurance policy no matter who you are insured with, to make sure you get the quality repair and service you would want. If you're involved in an accident or your car is stolen, just one call to us and we'll look after your claim from start to finish ensuring your Volkswagen is restored to the highest standard.

Activate your cover and benefit from:

- A guarantee that your Volkswagen will be repaired by a Volkswagen approved repairer and Volkswagen trained technicians, using only genuine Volkswagen parts and paints.
- A dedicated Claims Manager who will manage your claim from start to finish, liaising with your insurer and the repairer so you don't have to.
- Help to recover any uninsured losses using our Legal Expenses Cover.
- Online claims tracking so you can keep up to date with the status of any claim.

Volkswagen Ensurance is free to all Volkswagen customers for three years and it only takes a minute to get cover. To find out more and to activate your cover, visit [volkswagen-ensurance.co.uk](http://volkswagen-ensurance.co.uk)

### Volkswagen Finance<sup>6</sup>

Volkswagen Finance specialises in providing funding solutions for Volkswagen drivers. Whether your Volkswagen is for private or business use, you can choose from a range of funding options.

- Solutions – a Personal Contract Plan
- Hire purchase
- Lease purchase
- Finance lease
- Contract hire

With all Volkswagen Finance products you can choose a fixed-cost maintenance plan to help you budget for your servicing and maintenance costs. No matter what finance product you choose, your local Volkswagen retailer will be able to provide you with a personalised quote that could meet your budget and vehicle needs.

### Fuel consumption and CO<sub>2</sub> Emissions

Fuel consumption and CO<sub>2</sub> figures are obtained under standardised EU test conditions (Directive 93/116/EEC). This allows a direct comparison between different manufacturer models but may not represent the actual fuel consumption achieved in 'real world' driving conditions. More information is available on the Volkswagen website at [www.volkswagen.co.uk](http://www.volkswagen.co.uk) and at [www.dft.gov.uk/vca](http://www.dft.gov.uk/vca).

The weight of a vehicle will influence the level of CO<sub>2</sub> emissions it produces; as a result, vehicles with higher levels of specification and factory-fitted options may emit higher levels of CO<sub>2</sub>. Choosing larger alloy wheels than those fitted as standard may result in increased fuel consumption as well as higher CO<sub>2</sub> emissions and subsequently an increased Vehicle Excise Duty (VED) band. BIK rates paid by company car drivers may also increase. In some instances, the recommended 'On the road' retail price paid for a vehicle may increase as a result of the increased VED rate. CO<sub>2</sub> is the main greenhouse gas responsible for global warming.

The specifications contained in this brochure are for information purposes only and are subject to change.

### Volkswagen Roadside Assistance

Every new car is registered for Volkswagen Roadside Assistance for one year except the Touareg which is registered for three years. This provides vehicle roadside and home recovery in the unlikely event of a breakdown in the UK and Europe (subject to conditions). Volkswagen Roadside Assistance can also be purchased for subsequent years. For full details, please contact your authorised Volkswagen retailer. Exclusions and terms and conditions apply. For pricing and further details of Volkswagen Roadside Assistance, please consult your authorised Volkswagen retailer, or visit [www.volkswagen.co.uk](http://www.volkswagen.co.uk)

### Tax Free Sales

For full details, please contact your authorised Volkswagen retailer.

### Please note:

Some illustrations in this brochure do not necessarily reflect UK specifications and may not be available. In particular, controls and some items of equipment are positioned differently for the UK. The specifications contained in this brochure are for information purposes only and are subject to change. If you require any specific feature, you must consult your authorised Volkswagen retailer who is regularly updated with any change in specification. Please check model availability and full specification details with your authorised Volkswagen retailer prior to ordering. Note: we would like to advise you that telephone calls to Volkswagen Customer Care may be monitored and recorded as part of our training and quality assurance processes. All our monitoring and recording processes meet Ofcom regulations.

<sup>1</sup> All warranty work must be completed by an authorised Volkswagen retailer or repairer.  
<sup>2</sup> The inspection service first at 3 years (or 40,000 miles) and then every second year (or 40,000 miles) has additional workscope.  
<sup>3</sup> The quoted mileage is based on a conversion from kilometres and is therefore unlikely to exceed circa 18,000 miles between oil changes.  
<sup>4</sup> Volkswagen Financial Services is a trading name of Volkswagen Financial Services (UK) Limited ('VWFS UK'). Registered in England and Wales number: 2835230. Registered Office: Brunswick Court, Yeomans Drive, Blakelands, Milton Keynes MK14 5LR. Financial and consumer credit services are provided by VWFS UK. Annual insurance credit is provided by Ageas Retail Limited. Volkswagen Motor Insurance from VWFS UK is sold and administered by Ageas Retail Limited, registered in England and Wales number: 1324965. Registered Office: Ageas House, Hampshire Corporate Park, Templars Way, Eastleigh, Hampshire SO53 3YA. VWFS UK and Ageas Retail Limited are not part of the same corporate group.

<sup>5</sup> Ensurance from Volkswagen Financial Services is sold and administered by Lawshield UK Limited, registered in England number: 3360532 (registered office: Lawshield House, 850 Ibis Court, Lakeside Drive, Centre Park, Warrington, Cheshire WA1 1RL) and underwritten by UK General Insurance Limited on behalf of Ageas Insurance Limited, registered in England number: 354568 (registered office: Ageas House, Tollgate, Eastleigh, Hampshire SO53 3YA).  
<sup>6</sup> Finance is available to 18s and over, subject to status. Terms and conditions apply. Volkswagen Finance.

# The Jetta

Volkswagen Information Service. Telephone: 0800 333 666  
Internet: [www.volkswagen.co.uk](http://www.volkswagen.co.uk)  
© Volkswagen Group United Kingdom Limited 2016.  
Issue: 4 March 2016. Printed in UK.  
PVW917JETBRO



[facebook.com/VolkswagenUK](https://facebook.com/VolkswagenUK)



[@UKVolkswagen](https://twitter.com/UKVolkswagen)



[youtube.com/UKVolkswagen](https://youtube.com/UKVolkswagen)